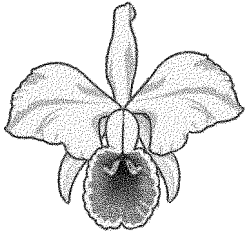


# Bankstown Orchid Society



# BULLETIN

February | March 2011 (Volume 42, Issue 1)

**PATRON**  
Doug Sheddon

**PRESIDENT**  
Veronica Clowes

**SECRETARY**  
Doris Scott  
Ph: 9796 1038

**TREASURER**  
Lyn Donald

**NEWSLETTER**  
Toni Benton

## Reminder of Day Meeting Saturday 19th March

**10.00 am start**

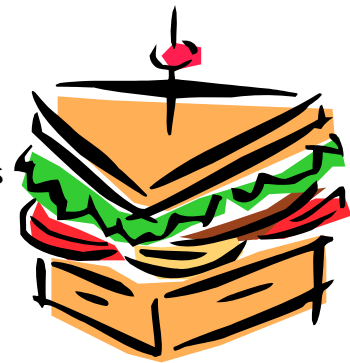
Bring along your friends. We will have tasty sandwiches for lunch.

Robert Bisetto will give a talk about how he grows his plants.

The Orchid Tray Company will be along to sell their wares and let us know what is new.

Great raffle and lucky door prizes.

For your Diary: Next Day meeting 22 October.



## General Meetings

- ◆ **Saturday 19th March - 10.00 am**  
First Day meeting of 2011
- ◆ **4th April - 7.30 pm**  
Rachel from Glamourchids
- ◆ **2nd May - 7.30 pm**  
Discussion of Benched Plants



## What 's Inside

- ◆ Calendar of Events, 2011 ..... 3
- ◆ Show Schedule Chester Square Show..... 3
- ◆ The Curse of Boisduval Scale by Jim Brydie.. 5

Printed and Published by Bankstown Orchid Society Inc  
Official address: PO Box 324 Chester Hill NSW 2162  
Web: <http://www.bankstownorchidsociety.org.au>

Print Post Approved  
PP242122-00002

*Bankstown Orchid Society Inc disclaims all responsibility for any loss or damage which may be attributed to the use or misuse of any materials published in this bulletin.*

## President's Message

I know it's already ¼ over, but welcome to 2011 and the first bulletin for the year. Our auction went off without problems, but I was a little disappointed that only 11 members sold plants this year, however we managed to raise \$117.60 for our club... Thank you all. I know that those of you who bought plants, each added something wonderful to your collections.

Is the first meeting of the new year the wrong time for our auction? Think about it and we'll talk at the next meeting. Suggestions are really welcome!

Now for something different: I recently discovered a lovely lady called Linda Roberts, who is a manufacturing jeweller in a very small town called Natchitoches, in the state of Louisiana U.S.A.

She is also the Secretary of her local orchid society, the Central Louisiana Orchid Society, in Alexandria LA, and has agreed to swap newsletters with us, so we can read about her little society and their members achievements. Kind of like a relative living far, far away.

I came upon her because I receive a daily post (by email) from the OrchidGuide Digest [orchids@freelists.org](mailto:orchids@freelists.org), and an article from the Washington Post Newspaper was talking about local Louisiana craftsmen..... among them was Roberts Manufacturing Jeweler, makers of all things Orchid, and lots of other things as well.

OK, so show me a lady orchid grower who doesn't also like jewellery??

So I went to Linda's website, <http://www.robertsmanufacturingjeweler.com>, promptly purchased several beautiful pieces at very reasonable rates, and I am absolutely delighted. It was easy to pay for my purchases using Paypal, which has a SECURE Website, and operates worldwide.

I will bring my pieces to a couple of meetings so you all can come and have a look, then you can visit the website for yourselves, and maybe add one or two things to your own collection. These are 'one of a kind' pieces, and cost from as little as \$US 20.00 (our dollar is just about equal to the US dollar at present)

**Veronica**



## Calendar of Events

- ◆ **March 19 Bankstown OS Day Meeting 10am**
- ◆ April 2 Yvonne and Phil Spence of Orchid Productions Open Day at 8 Dashwood Close, Wamberal - 9am-5pm
- ◆ **April 4 Bankstown OS Meeting 7.30pm**
- ◆ April 8-10 Sydney Orchid Fair, Castle Hill Showground
- ◆ April 16-17 Collector's Plant Fair, Bilpin
- ◆ May 2 Bankstown OS Meeting, 7.30pm
- ◆ May 20-22 Orchids Out West, Hawkesbury Racecourse, Clarendon
- ◆ **May 25-29 Bankstown Show at Chester Square Shopping Centre**

## Autumn Orchid Show Schedule

**Thursday 26 May - Sunday 29 May 2010**  
**Chester Square Shopping Centre**

### Setup Details

- Table Setup: Wed 25 May 4 pm at Chester Square
- Plant Benching: Wed 25 May 5 pm-7 pm and Thur 26 May 7.30am-noon
- Judging: Thur 26 May at 7 pm
- Dismantling Sun 29 May from 2 pm

*The President and Committee of the Bankstown Orchid Society Inc. wish to thank the Chester Square Shopping Centre for providing the venue and Sponsorship.*

### Major Prizes

- **Grand Champion: \$75 and Sash**
- **Reserve Champion: \$50 and Sash**
- **Champions: \$20 and Sash**  
Cymbidium | Cattleya | Australasian Native Species/Hybrid  
Cypripedioideae Species/Hybrid | Oncidium/Odontoglossum Alliance  
Phalenopsis | Species | Any Other Orchid | Seedling | Novice

**Prize Money all Classes: 1st \$10.00 | 2nd \$5.00**

For further information please contact:

President	Mrs Veronica CLOWES	9649 2719
Show Marshalls	Mr Stephen LEE	9644 8760
	Mr Max REDMAN	9607 3022
Judges Convenor	Mrs Veronica CLOWES	9649 2719
Treasurer	Ms Lyn DONALD	9801 8808
Secretary	Mrs Doris SCOTT	9796 1038

**MEMBERS ARE REMINDED THAT YOUR ASSISTANCE IS REQUIRED FOR SHOW SECURITY!!!**

### OPEN CLASSES

- Class 1 Best Cymbidium greater than 90mm
- Class 2 Best nominated Cymbidium seedling
- Class 3 Best Cymbidium 60mm to 90mm
- Class 4 Best Cymbidium up to 60mm
- Class 5 Best Australasian native Species
- Class 6 Best Australasian native Hybrid
- Class 7 Best Australasian native Terrestrial Species or Hybrid
- Class 8 Best Australian Native Sarcanthinae Species or Hybrid
- Class 9 Best Cattleya Exhibition type
- Class 10 Best Cattleya Cluster type
- Class 11 Best Cattleya Miniature (65-110mm)
- Class 12 Best Cattleya Cocktail type (less than 65mm)
- Class 13 Best Laeliinae Intergeneric
- Class 14 Best Laeliinae Species
- Class 15 Best Phalenopsis Classic shape (80mm and over)
- Class 16 Best Phalenopsis Classic shape (under 80mm)
- Class 17 Best Phalenopsis Novelty
- Class 18 Best Dendrobium Hybrid
- Class 19 Best Masdevallia Hybrid
- Class 20 Best Vanda

- Class 21 Best Ascocenda
- Class 22 Best Vandaceous other
- Class 23 Best Oncidium Hybrid
- Class 24 Best Oncidium Species
- Class 25 Best Odontoglossum, and Odontioda
- Class 26 Best Cyripedioideae hybrid (Paphs/Phrags)
- Class 27 Best Cyripedioideae Species (Paphs/Phrags)
- Class 28 Best Paphiopedilum Novelty Hybrid and Primary Hybrid
- Class 29 Best Pleurothallidinae
- Class 30 Best Species the Americas
- Class 31 Best Species Asian
- Class 32 Best Monopodial Species Asian
- Class 33 Best Monopodial Species other
- Class 34 Best Any Other Genera
- Class 35 Best Seedling (other than Cymbidium) to be nominated

### NOVICE CLASSES

- Class 36 Best Cymbidium
- Class 37 Best Cattleya
- Class 38 Best Species (Any genera)
- Class 39 Best any other genera



Hi Everyone,

It is with a heavy heart that we inform you that Murray Shergold, co-proprietor of Easy Orchids has suffered a severe stroke and will be concentrating on his recovery for the foreseeable future. His wife Jean will be with Murray during this time and a good part of it will be spent in Brisbane 2 1/2 hours north of their home and business. For those of you that know Murray and Jean and wish to be informed of his progress or would like to send them your wishes, you can do so via Jean's facebook page. Jean would like to thank all those people who have already conveyed their kind thoughts.

For Easy Orchids this will mean a couple of small changes. Our new interim business hours are 8.00a.m. to 4.00p.m. Monday to Friday, during these hours our friendly, knowledgeable staff will be available to assist you personally. The phones will no longer be answered personally out of business hours so if you need to speak to us then, please leave a message, send us an email or order via our website [www.easyorchids.com](http://www.easyorchids.com). The nursery will no longer be open on weekends except by arrangement.

Otherwise it is business as usual here at Easy Orchids and we look forward to serving you.

## The Curse of Boisduval Scale

by Jim Brydie

[Courtesy Cumberland Orchid Circle]



### Boisduval scale on a Cattleya

Sometimes just called 'orchid scale', this is one of the most insidious, and probably the most difficult orchid pest to control. If left untreated, it almost invariably kills the plant. Worse still for us, and for all garden lovers, Boisduval scale is not just a pest of orchids. It is a common pest of many palm species, and it also infests an amazingly wide range of other plants. Including, but not limited to: Agave, Ivy, Cactus, Bromeliads, Cyprus pines, Wattle, Pepper trees (Schinus), Dracaena, Cassia, Roses, Citrus trees, Figs, Mango, Grapes, Coffee, & Bananas.

The scale species (*Diaspis boisduvallii*) originated in the tropical Americas but is now distributed worldwide. It is thought to have been introduced to the world during the early 1800's when Europe went mad importing exotic plants collected from all over the world. It was named in 1869 in honour of M. Boisduval, who collected the first specimens of the pest off plants in the greenhouses of the Jardin de Luxembourg in Paris.

Boisduval is an armoured scale, which means that the body of the scale insect is protected by a cover (the armour) made from a combination of wax secreted by the insect, and the cast skins of previous growth stages. This external armour gives the scale a white appearance but if you remove it, the body of the insect itself is usually yellow.

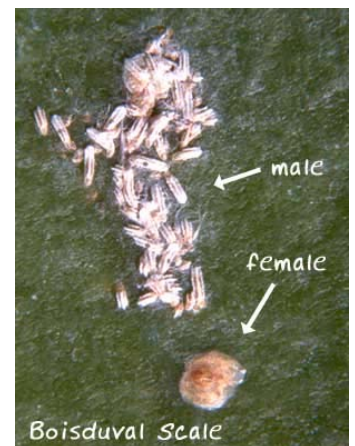
Male and female Boisduval scale look completely different. Adult females (in their armour) are circular, and about 1.2 to 2.5 mm diameter. The males are rectangular, perhaps 0.4mm wide by up to say 1.2mm long. They have 3 distinct ridges along their length. Another difference between the sexes is that individual females tend to be distinctly separate on the plant surface, even though there may be many in a small area at times. The males on the other hand are just the opposite. They cluster in mealy, cottony masses, which are easily mistaken for Mealy bug or even white fly.

Under their armour, adult females appear larvae-like. They have no wings, legs, or eyes, and remain, in one place, throughout their lives to feed and reproduce.

Adult males are again very different in appearance and behaviour from the females. They are tiny, winged creatures with eyes and legs. When mature, they emerge from their armour in late afternoon to look for a mate, a process which is probably aided by pheromones secreted by the females. They do not feed as adults, living only a few hours to mate, and because of their short life, you are very unlikely to see them.

So far, we have only discussed the adults. Like most insects, armour scales go through a series of pre adult nymph or crawler stages before they reach maturity. Females go through 3, and males go through 5 stages. The number of days for each developmental stage, and the number of generations per year, depend on temperature, humidity, and rainfall, but an average time for a generation of scale insects to mature, from egg to adult, would be about 30 days. They do however have overlapping generations and it is partly this continual procreation that makes it such a formidable pest to eliminate. In one scientific study, 7 females were introduced onto a Cattleya plant, and within 5 months produced a colony of 10,000 scales.

The process begins with the female laying eggs under its protective shell. The first stage after hatching is the only nymphal stage with legs, so the insects are called crawlers. The crawler stage is short, and crawlers do not feed. After hatching, crawlers may stay under the



maternal armour for several hours until outside conditions, especially temperature and humidity, are good. After they leave the cover, they wander for a period ranging from minutes to days, but usually a few hours. At the end of the wandering period they flatten against the leaf or stem and begin to secrete their armour. As crawlers, the insects can move from plant to plant, but as they only travel short distances, this is mostly only if the plants are touching each other.

Newly settled nymphs insert their piercing and sucking mouthparts into plant tissue and start feeding on plant juices. Female nymphs shed their skin twice as they grow and develop. Males have a 5 stage development and do not feed during the last two stages. Once the crawler has settled to feed, all subsequent immature stages occur while the nymph is fixed in one place, under their armour, except for the last stage in the male development, which is the adult male that then leaves the armour in search of a mate.

### How the Pest Spreads

Natural spread is short distance only, by crawlers walking after they hatch. Ants do not move them around because the scale do not produce honeydew, or any other product that interests them, but as the crawlers are so tiny, they can also be distributed from plant to plant by wind or moving air currents, or by falling from plants hanging above. But, without any doubt whatsoever, the worst vector for spreading this pest is mankind. Long range dispersal of scale usually occurs by man transporting infested plant material. This can be within a collection by moving plants around, or between collections, as infested plants are sold or given away. When this happens another collection of plants is infested before you know it.

### The Damage

Armoured scales feed on plant juices. The threadlike mouthparts that they insert into the plant tissue to feed can be up to 8 times longer than the insect itself, and as they feed, they inject a toxic saliva of enzymes that kills the cells around it. They cause loss of vigour, deformation of infested plant parts, and yellowish chlorotic blotches on leaves and stems where the cells are badly damaged. Even a single female can eventually cause a centimetre wide, roughly circular yellow patch on the tissue around them. Ultimately, they cause loss of leaves, and even death of the plant, and they can also spread virus from plant to plant.

Boisduval scale can occur on any of the aerial portions of your orchid, especially the leaves and the pseudobulbs. In some cases it can also infests the roots, even inside the pot, among the bark or other medium. In heavy infestations the scale will be easily seen on the flat surfaces of leaves and in patches up and down the pseudobulbs. The worst damage though, is done at the base of pseudobulbs, under the papery sheaths, where they can destroy the eyes that would become future years growths. You may not notice the damage until the pests have done their work, and if the infestation is severe, the primary eye and all secondary eyes may be damaged beyond recovery, sending the plant into a downward spiral from which it cannot recover. Plants with tightly clustered pseudobulbs are particularly at risk in this way.

### What to do

As most infestations are brought into an orchid collection on other plants, the first line of attack has to be at the door of your greenhouse. Newly acquired plants should be thoroughly inspected before adding them to your population of healthy orchid plants. Carefully strip away or peel back



Females on Cattleya



Leaf males and females



Yellow blotching

the dry sheaths of the pseudobulbs, to make sure there are no scales hiding under them. Also pay special attention to the folded base of the leaf where it connects to the top of the pseudobulb, and to any crinkled grooves up and down the sides of the pseudobulbs. If there are no visible scales above the surface of the medium, you can be pretty sure there are none on the roots in the pot either.

Beyond inspection, you might also consider giving new plants a prophylactic spray of insecticide, or perhaps keeping new plants in quarantine for several weeks and inspect them regularly for scale.

If you do find scale on a new plant, or one already in your collection, I believe spraying with insecticide is required. Some books suggest physical removal by scrubbing with cotton buds and isopropyl alcohol etc, but personally, I wouldn't trust this approach. You only have to miss one female under the rhizome or in a crack that you can't see, and a new generation is off and running in weeks.

The waxy armour coating protects egg laying females from most chemical controls. The scale are most vulnerable during the crawler stage, but while you may eliminate crawlers with one treatment, the pest's overlapping generations mean that it takes repeated application of chemicals to wipe out an infestation. Applications must be repeated several times at 10-14 day intervals, and three applications of pesticide is the minimum for effecting control. With the more benign treatments such as soaps or oils, the battle can be a long and prolonged one, and you may merely be limited to keeping the scale at controlled levels.

Many insecticides can be used, but I suggest that you select one that has a systemic effect. That is, one that is absorbed by the plant tissue itself and that poisons the insect when it sucks the poisoned sap. The one I usually use is Dimethoate, which is commonly sold in Australia as Rogor. Use it at the full rates shown on the container for the pest concerned. Don't be tempted to dilute it to a lower rate, as this may not kill all the target pests and can lead to a build up of resistant strains of the insect over time. For the same reason, it is also recommended that you don't use the same insecticide for more than 9 consecutive months, so another systemic insecticide that you might consider using is Imadocloprid, which is used in Confidor among other brands.

### Scale on the Roots

One final observation. If you find one of the small number of plants where the scale infests the root system inside the pot, (in my experience it is mostly Cattleya alliance plants), I have found that the only practical remedy is to throw the whole plant, pot and all, into a bucket of the systemic insecticide with a weight holding it down, and leave it totally submerged for at least an hour. Afterward, fish it out with a wire and let it hang for a few days until it dries off. Then, wearing rubber gloves to keep your skin from absorbing insecticide, pull it out of the pot and clean it off thoroughly as best you can, and repot. In my experience so far, it doesn't seem to hurt the plant, and it does kill all the scale.

When you use pesticides, always ***remember that insecticides kill insect pests because they are poison and they are also poison to you as well.*** Make sure that you follow the instructions for safe use, and take the instructions seriously. Even if you don't poison yourself immediately, many insecticide poisons have a medium term cumulative effect on humans, and you may harm yourself over time if you don't take proper care.

### References

Boisduval Scale on Orchids by Paul Johnson (Orchid Digest Sept/Oct/Nov 2010) University of Minesota (<http://www.entomology.umn.edu/cues/inter/inmine/Scale.html>)  
Beaumont Research Center, Hilo, Hawaii ([www.extento.hawaii.edu/kbase/crop/type/d\\_boisdu.htm](http://www.extento.hawaii.edu/kbase/crop/type/d_boisdu.htm))  
American Orchid Society article – A Scaly Problem



Dying from scale

## Results of Meeting 7 February 2011

70 plants were exhibited at the meeting

### Best Orchid

K&F Harris Rhycostylis retusa 'Keith'

### Best Novice

B Dixon C warscewiczii

### Open Section

#### Exhibition Cattleya

1st Crosby&Costa C walkeriana alba x Lc Nippon Livarba  
2nd Crosby&Costa Blc Chinese Bronze 'Marco Polo'

#### Cluster Cattleya

1st J&N Janz C Fitz Eugene 'Dixon'

#### Miniature Cattleya (66mm—110mm)

1st J&N Janz C Lulu Pink Blush  
2nd P McCann Bc Island Charm x Sc Lana Coryell  
3rd L Valli Sc Maholo Jack 'Andrews'

#### Cocktail Cattleya (< 65mm)

1st Crosby&Costa Sc Dal's Good One  
2nd Crosby&Costa Slc Mem Ken Martin 'Dot'  
3rd Crosby&Costa Pot Dal's Emperor

#### Laeliinae Intergenerics

1st R Bisetto Encyclia 'Cindy'  
2nd C Nidagal Ctna Why Not  
3rd R Bisetto Ctna Why Not 'Round and Red'

#### Laeliinae Species

1st C Nidagal C forbesii

#### Oncidiinae Alliance Any Other

1st Crosby&Costa Colm. Wildcat 'Yellow Butterfly'  
2nd J&N Janz Mtdm Hawaiian Sunset  
3rd Crosby&Costa Colm. Wildcat 'Carmela'

#### Ascocenda

1st R Bisetto Ascda Fuch's Spotted Cat 'Brighton Spots'

#### Phalaenopsis Classic Shape (> 80mm)

1st L Mayer Phal Zauberose x Linenzauber  
2nd S Lee Phal Amabilis x Pinlong Memory  
3rd L Mayer Phal Hunter

#### Phalaenopsis Novelty

1st C Nidagal Dtps Hsing Sonata 'Red Arrow'  
2nd Crosby&Costa phal Taida Peral  
3rd C Nidagal Phal Dragon's Dazzler

#### Paphiopedilum Novelty/Primary Hybrids

1st L Mayer Paph Iantha Stage

#### Vandaceous Other

1st S Lee Vasco Brisbane River 'Brighton'  
2nd J&N Janz Sartylis Blue Knob  
3rd C Nidagal Unknown

#### Monopodial Species

1st K&F Harris Rhycostylis retusa 'Keith'  
2nd S Lee Dor Pulcherrima 'Alba' Yellow Eyes x  
Dor Pulcherrima var chumponensis  
3rd G Birss Eurychone rothschildiana

#### Species Dendrobium

1st R Bisetto Den formosum  
2nd C Nidagal Den bilobum  
3rd J Featherston Den dearii

#### Oncidium Hybrids

1st R Bisetto Psychopsis Butterfly  
2nd J&N Janz Tol Barbie x Susan 'Perriera' x Irene Gleason x Spanish Beauty  
3rd J&N Janz Onc tolynea

#### Oncidiinae Species

1st C Nidagal Onc Papilio

#### Dendrobium Hybrids Australian

1st Crosby&Costa D Moondarra x D Aussie Victory  
2nd L Buivids Den Aussie Angel x Den Sunglow

#### Sarcanthinae Species Australian

1st G Birss Sarc harticalcar

#### Sarcanthinae Hybrids Australian

1st C Nidagal Sarc Velvet 'Holly' x Sarc Elise 'Goodwood'

#### Terrestrial Species Australian

1st R Bisetto Ground Orchid 'Ladies Tresses'

#### Species The Americas

1st R Bisetto Macrocinium manabinum  
2nd G Birss B Nodosa An Original x B Nodosa 'Green Star'

#### Species Any Other

1st V Clowes Bulb odortissimum  
2nd J Chow Grammatophyllum measurianum  
3rd C Nidagal Bifrenaria tetragna

#### Any Other Genera

1st J&N Janz Epi Dream x Epi Joseph  
2nd J&N Janz Epi Gold Valley Hildos  
3rd L Valli Den Topaz Glory

### Novice Section

#### Cluster Cattleya

1st B Dixon C warscewiczii



*Bifrenaria harrisoniae*

### PLANT BENCHING

At monthly meetings all plants must be benched by 7:20pm

Rewrite those labels if they are illegible.

## Results of Meeting 7th March 2011

110 plants were exhibited at the meeting

### Best Orchid

T Costa & S Crosby C Dal's Emporor

### Best Novice or Junior

W Choy Miltonia unknown

### Best Foliage

1st, 2nd, 3rd S Lee

### Open Section

#### Intermediate Cymbidium (60mm-85mm)

1st M Kurtyka Cym Enzan Summer  
2nd J&N Janz Cym Kasuda Shining 'Geyserland'

#### Exhibition Cattleya

1st Crosby&Costa C Dal's Girl 'Arcadia'  
2nd Crosby&Costa C Cal's Choice 'Castle Creek'  
3rd Crosby&Costa Blc Tribute 'Independence Day'

#### Cluster Cattleya

1st R Farrugia C Interglossa 'Mikabee' x Lc  
Summerland Girl 'Orchidglade'  
2nd Crosby&Costa C Bowringiana x C Chocolate Drop  
3rd L Buivids C Winema

#### Miniature Cattleya (66m-110mm)

1st L Buivids C Mini Purple 'Castle Bead'  
2nd R Farrugia Slc Lana Coryell 'Alex' x C Horace  
'Maxima'  
3rd Crosby&Costa C Chocolate Drop x Blc Waikiki Gold  
'Classic'

#### Cocktail Cattleya (under 65mm)

1st Crosby&Costa C Dal's Emporor  
2nd L Buivids C Jungle Gem  
3rd Crosby&Costa C Dal's Emporor

#### Laeliinae Species

1st L Valli C granulosa  
2nd C Nidagal C bowringiana 'Courelia'

#### Odnoglossum/Oncidium Alliance Any Other

1st J&N Janz Milt Minas Gerais  
2nd Crosby&Costa Milt Wildcat 'Hilda'  
3rd C Nidagal Milt Purple Dancer

#### Ascocenda

1st S Lee Ascda Ashley Low 'Tangerine'  
2nd C Nidagal Asc unknown

#### Phalaenopsis Classic Shape (> 80 mm)

1st G Birss Phal Unknown

#### Phalaenopsis Novelty

1st Crosby&Costa Phal I-Hsin 'Sunflower'  
2nd Crosby&Costa Phal Taida Pearl

#### Paphiopedilum/Phragmipedium Species

1st A Oakford Paph dianthum

#### Paphiopedilum/Phragmipedium Complex Hybrids

1st Crosby&Costa Phrag Sorcerer's Apprentice  
2nd P Shaw Paph Pepper Puddle  
3rd A Oakford Phrag calurum

#### Australian Native Non-Terrestrial

1st R Bisetto Pomatocalpa macphersonii  
2nd G Birss Sarc hirticalcar

#### Vanda

1st M Redman V Robert's Delight x V Shang Sai  
Blue  
2nd R Bisetto V Robert's Delight x Crown Fox 'Big  
Red'  
3rd C Nidagal V Fuch's Fortune x V coerulea

#### Vandaceous Other

1st R Farrugia Vasco Pine Rivers 'Narangba'  
2nd R Bisetto Vasco Marissa's Magic Spellbound

#### Monopodial Species

1st S Lee Dor Pulcherrima var album 'Yellow  
Eyes' x var chumpornensis  
'Brighton'  
2nd S Lee Dor pulcherrima chumpornensis sub  
var 'Alba'  
3rd S Lee Dor pulcherrima var chumpornensis  
Alba x var chumpornensis 'Brighton'

#### Dendrobium Hybrids

1st R Bisetto Den Enobi Purple 'Nopporn'  
2nd Crosby&Costa Den Dal's Pixie x Den Dal's Wonder  
3rd M Redman Den Water-Omeo x Cooktown

#### Species Dendrobium

1st G Birss Den oligophyllum  
2nd R Bisetto Den delacourii  
3rd M Redman Den auriculatum

#### Oncidium Hybrids

1st L Friess Onc Sharry Baby 'Sweet Fragrance'  
2nd J&N Janz Onc Sharry Baby 'Yellow Mutation'  
3rd J Costa Onc unknown

#### Dendrobium Hybrids Australian

1st Crosby&Costa D Moondarra

#### Sarcantinae Species Australian

1st I Lawson Sarco roseus

#### Sarcantinae Hybrids Australian

1st P Dowling Sarco Riverdene  
2nd C Nidagal Sarconopsis lavinia

#### Species The Americans

1st P Shaw Encyclia cochleata Tinonee x Enc  
colhleata var alba  
2nd L Buivids Prosthechea cochleate  
3rd G Birss Macrolimum manabinum

#### Species Any Other

1st S Lee Dendrochilum latifolium v.  
macranthum  
2nd S Lee Dendrochilum latifolium v.  
macranthum  
3rd Crosby&Costa Dendrochilum longifolium

#### Any Other Genera

1st J&N Janz Epid Gold Valley 'Hildos'  
2nd J Fetherston Ctsm Susn Fuchs 'Ox Blood' x Ctsm  
pileatum

#### Any Other Genera

1st C Nidagal Masd atahualpa

### Novice Section

#### Species

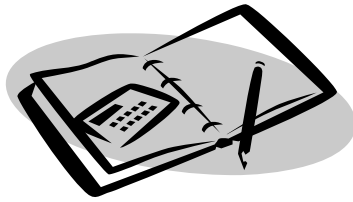
1st B Dixon Den Intense

#### Any Other

1st W Choy Miltonia unknown

If you have a computer check out the Picture Gallery of the month's benching plants at:  
<http://www.bankstownorchidsociety.org.au/Photosmeetings.htm>

## S & N ACCOUNTING SERVICES



Taxation and Accounting Consultants Registered  
Tax Agents

Suite 2 & 3, 9 Chester Hill Rd, Chester Hill 2162  
Phone: 9644 7019, Fax: 9644 7406



*We get you moving*

Senior's Card accepted

Buying? Selling?  
Roberta Roper JP\* Licensed Conveyancer\*  
Lic. No. 1193990  
9596 2517

## Lingel Pty Ltd Plastic Moulding and Fabricating

Cut to size  
No job too small

2/26 Kelso Crescent, Moorebank  
2170  
Phone: 9600 9999 | Fax: 9601 2266

## AVON CALLING

Interested in Avon Products??

Call me for an Avon Book

Phone Toni on 9702 0176 or  
Mobile 0423 532 342



## BANKSTOWN DISTRICT SPORTS CLUB

are proud sponsors of the  
**Bankstown Orchid Society Inc**

The club has the following services for members and their guests

**Greenfield Station Restaurant  
Top Shows and Entertainment  
Weddings, Functions & Parties**

Bankstown District Sports Club  
8 Greenfield Pde, Bankstown  
Ph: 9709 3899

**MINUTES OF GENERAL MEETING**  
**7 February 2011**

Minutes of the General Meeting of Bankstown Orchid Society held on 7th February 2011 at the Scottish Hall, Weigand Ave Bankstown.

Meeting opened at 7:30pm by President Veronica Clowes who welcomed members and their friends.

**Correspondence**

- Bulletins from Various Societies
- Email from Children's Research Re apology for not attending Christmas Party and a Christmas card from same.

**General Business**

- Next meeting 7th March at 7.30 pm with guest speaker from Neutrog.
- Next Day meeting 19th March at 10 am.
- Badges available @ \$5 each.
- Shows for year: 25-29 May at Chester Square: 27-31 July at Bass Hill Plaza: 25-28 August. The day before the start of every show is for setting up.
- Presentation of Awards
- 10 minute break
- Auction
- Supper
- Raffle Draw

Meeting closed at 9:16 pm

**MINUTES OF GENERAL MEETING**  
**7 March 2011**

Minutes of the General Meeting of Bankstown Orchid Society held on 7th March 2011 at the Scottish Hall, Weigand Ave Bankstown.

Meeting opened at 7:30pm by President Veronica Clowes who welcomed members, friends and their Guests.

**Correspondence**

- Bulletins from various societies.
- Flyer from Tinonee Re Castle Hill Show.
- Note from June Fetherston re Sale of Plants.
- Bill from Post Office.

**General Business**

- Next Day Meeting 19th March.
- Next Meeting 4th April.
- Phil Spence Orchid Productions has an Open Day on 2nd April
- Castle Hill Orchid Show - April 8-10
- Chester Square Show: 26-29th May
- Mingara Show: 25-26 June
- Bass Hill Show: 28-31 July
- Easter Show needs volunteers for the Orchid Exhibit.
- Badges available @ \$5 each - see Veronica
- 10 Min Break
- Lecture by Neutrog
- Supper
- Presentation
- Raffle Draw

Meeting closed at 9:15 pm

**HIRE OF SOCIETY TABLES TO MEMBERS**

**Contact Max Redman 9607 3022**

- 1-9 Tables: \$6 each
- 10 or more: \$5 each

Not available during Shows.

All damages will be the responsibility of the Hirer.

**Fees**

- Single Pensioner \$5
- Couple \$7
- Couple Pensioner \$6
- Family \$8
- Junior \$1

**BANKSTOWN ORCHID SOCIETY INC**

**BULLETIN**

*Print Post Approved*

*PP 242122/00002*

If undeliverable, please return to:

**PO BOX 4405 WINMALEE 2777**

**SURFACE  
MAIL**

POSTAGE  
PAID  
AUSTRALIA