

Bankstown Orchid Society



BULLETIN

June | July 2017 (Volume 48, Issue 3)

PATRON
Doug Sheddon

PRESIDENT
Veronica Clowes

SECRETARY
Ernest Taylor
9750 9226

TREASURER
Lyn Donald

NEWSLETTER
Toni Benton



Den. Anne's Rainbow Surprise



Phrag. pearcei

St Ives Orchid Fair



ST IVES SHOWGROUND
Mona Vale Road, St Ives

Friday 18th August 2017 9 am to 4 pm
Saturday 19th August 2017 9 am to 4 pm
Sunday 20th August 2017 9 am to 3 pm

Bus Route 196: Gordon Station - St Ives Village - Terrey Hills - Mona Vale
ADMISSION \$5 Children under 15 free

Bus groups welcome - concession,
Unlimited Free Parking, Wheel chair access

Bankstown Orchid Society
Shows 2017

26th-30th July

Bass Hill Plaza

1st-3rd September

Auburn Shopping Centre

Printed and Published by Bankstown Orchid Society Inc
Official address: PO Box 5397 CHULLORA NSW 2190
Web: <http://www.bankstownorchidsociety.org.au>

Bankstown Orchid Society Inc disclaims all responsibility for any loss or damage which may be attributed to the use or misuse of any materials published in this bulletin.

PRESIDENT'S REPORT



Our show at Chester Square is over for 2017, and we now look forward to Bass Hill 27th to 30th July. I thank you all for continuing to support your society by participating in our shows, selling your plants, attending our monthly meetings and supporting our raffles. It is a combination of all these things which keep our club alive and 'in the black'.

The times when shopping centres were able and willing to financially support community groups such as ours seem to be over, so we need to reassess how we go about showcasing our orchids, encouraging new members and continuing income for our members and club. As I told members last night, we have been offered an opportunity to set up an orchid display/sale at Auburn Central (Auburn Shopping Centre) including an offer of free parking, after hours security guard, local press advertising and free storage for our tables etc. to make set up easier. We cannot afford to ignore these opportunities as our current show venues have no guarantee of long term commitment.

So, members voted to go ahead with an Auburn event from Friday September 1st to Sunday September 3rd 2017. We will put together a display only, taking advantage of the end of Cymbidium season, hopefully with many plants offered for sale. More news of this event a little later in the year.

In the meantime, I hope your plants are all enjoying a winter rest.....remember, turn off the tap! Water very early in the morning when we have a warm day forecast, so that foliage has a chance to dry before nightfall.

Veronica

CALENDAR OF EVENTS 2017

- ◆ **July 26-30, Bankstown Show Bass Hill Plaza**
- ◆ August 11-13, National Orchid Extravaganza & Paphiopedilum Society Show, The Centre, 1 Pellitt Lane, Dural
- ◆ August 18-20 St Ives Fair, St Ives Showground
- ◆ **September 1-3, Auburn Shopping Centre**
- ◆ **September 4 Bankstown OS Meeting 7.30pm**
- ◆ October 6-8 Southern Orchid Spectacular, Caringbah High School
- ◆ **October 2 Bankstown OS Meeting 7.30pm**
- ◆ **November 6 Bankstown OS Meeting 7.30pm**
- ◆ **December 4 Bankstown OS Christmas Party 7.30 pm**

For a complete listing of all shows throughout NSW see NSW Orchid Society website

<http://www.orchidsocietynsw.com.au/Shows2017.htm>

Committee - 2017

President:	Veronica Clowes
Vice-President:	Max Redman
Secretary:	Ernest Taylor
Treasurer:	Lyn Donald
Registrar:	Stephen Lee
Ass Registrar:	Max Redman
Editor/Web:	Toni Benton
Committee:	
Joseph Chow	Doris Scott
Diana Carvey	May Chin
Marge Yabsley	

HIRE OF SOCIETY TABLES TO MEMBERS

Contact Max Redman 9607 3022

- 1-9 Tables: \$6 each
- 10 or more: \$5 each

Not available during Shows.

All damages will be the responsibility of the Hirer

Plant Benching

At monthly meetings all plants must be benched by 7:20pm
Rewrite those labels if they are illegible.

Winter Orchid Show Schedule 26 - 30 July, 2017 Bass Hill Plaza

Setup Details

- **Table Setup:** Wed 26 July from 2.30 pm
- **Plant Benching & Show Set Up:** Wed 26 July 4pm-6.30pm and Thur 27 July 7.30am-noon
- **Judging:** Thur 27 July at 7pm
- **Dismantling** Sun 30 July from 2pm (please be present from 1.30 pm)

Major Prizes

Grand Champion: \$75 and Sash
Reserve Champion: \$50 and Sash
Champions: \$20 and Sash

Cymbidium | Cattleya | Australasian Native Species/Hybrid | Cyripedioideae Species/Hybrid
 Oncidiinae | Phalaenopsis | Species | Any Other Genera | Seedling | Novice

Prize Money all Classes: 1st \$10.00 | 2nd \$5.00

For further information please contact:

President	Mrs Veronica Clowes	9029 2305
Show Marshals	Mr Stephen Lee	9644 8760
	Mr Max Redman	9607 3022
Judge's Convenor	Mrs Veronica Clowes	9029 2305
Treasurer	Ms Lyn Donald	0402 256 920
Secretary	Mr Ernest Taylor	9750 9226

MEMBERS ARE REMINDED THAT YOUR ASSISTANCE IS REQUIRED FOR SHOW SECURITY!!!

Open Classes

- Class 1 Best white, cream, yellow or green Cymbidium greater than 90mm
- Class 2 Best red or pink Cymbidium greater than 90mm
- Class 3 Best any other colour Cymbidium greater than 90mm
- Class 4 Best white, cream, yellow or green Cymbidium 60mm to 90mm
- Class 5 Best red or pink Cymbidium 60mm to 90mm
- Class 6 Best any other colour Cymbidium 60mm to 90mm
- Class 7 Best white, cream, yellow or green Cymbidium up to 60mm
- Class 8 Best red or pink Cymbidium up to 60mm
- Class 9 Best any other colour Cymbidium up to 60mm
- Class 10 Best nominated Cymbidium Seedling
- Class 11 Best Laeliinae Exhibition over 110 mm
- Class 12 Best Laeliinae Exhibition 65mm to 109mm
- Class 13 Best Laeliinae Exhibition 64mm or less
- Class 14 Best Laeliinae Cluster type
- Class 15 Best Laeliinae any other
- Class 16 Best Phalaenopsis 80mm and over
- Class 17 Best Phalaenopsis 79mm and under
- Class 18 Best Oncidiinae hybrid over 65mm
- Class 19 Best Oncidiinae hybrid up to 65mm
- Class 20 Best Cyripedioideae hybrid (Paphs/Phrags)
- Class 21 Best Cyripedioideae hybrid (novelty/primary hybrids)
- Class 22 Best Dendrobium Hybrid (other than native)
- Class 23 Best Pleurothallidinae hybrid
- Class 24 Best Australian/Australasian native hybrid
- Class 25 Best Any other Genera
- Class 26 Best Seedling other than Cymbidium
- Class 27 Best Species Laeliinae
- Class 28 Best Species Oncidiinae
- Class 29 Best Species Cyripedioideae
- Class 30 Best Species Dendrobium
- Class 31 Best Species Pleurothallidinae
- Class 32 Best Species Monopodial
- Class 33 Best Species Americas
- Class 34 Best Species Asian



- Class 35 Best Species other areas
- Class 36 Best Australian/Australasian species

Novice Classes

- Class 37 Best Species
- Class 38 Best any other Gener

Conditions of Entry

1. Initial class places are tentative until all results are collated and finalised the following day.
2. Entries are received upon the basis that the Society or its sponsors shall not be responsible for any loss, destruction nor damage to such exhibits and the exhibitor shall have no claim against the Society or Sponsors.
3. Entries are accepted on condition that they are disease free. The decision of the President or Show Marshal shall be final.
4. All competitive entries shall have been owned and in the possession of the exhibitor for the preceding six months.
5. All competitive entries should be correctly and clearly labelled with the name of the plant.
6. There shall be no restriction to the number of entries by an exhibitor in any class. Entries in joint names will be accepted. Only financial members may exhibit.
7. The Show Marshall and Committee reserve the right to reject, remove or rearrange any exhibit without giving any reason for that action and to reclassify any plant if necessary, prior to judging.
8. All plants shall be booked in and in position ready for judging by 12 noon on the day of judging.
9. Entries are eligible for judging in one class only, except where stated otherwise in the schedule.
10. If in the opinion of the Judges no exhibit in any class warrants a prize, none may be given. At the discretion of the Show Marshall additional classes may be created where warranted.
11. Plants for special prizes shall be selected from all exhibits in the show unless otherwise specified.
12. Judging shall be by a panel of Judges nominated by the O.S.N.S.W. Registrar and shall be in accordance with the standards and by-laws laid down by the O.S.N.S.W. Inc. The Judges decision shall be final.
13. No exhibit may be dismantled or removed prior to closing time of the show at 2pm on the final day of show.
14. 'Novice' shall mean: Any exhibitor until she/he has won either a champion award in one of our society shows, the yearly point score in the monthly competition of this society, or becomes an open class competitor in any other society.
15. 'Seedling' shall mean the complete plant grown from seed and flowered for the first time. Plants that have been grown on or divided prior to being exhibited on the show bench are not eligible to be shown as seedlings. For exhibition purposes seedlings shall retain their status of 'Seedling' throughout the flowering season in which they first flower. Mericlones are not eligible as seedlings.
16. 'Miniature species' are defined as Orchids with flowers 15mm or under in size across the widest part of the flower, regardless of the number of flowers, and distance of <200mm from 1st to last flower. All 'Miniature' species are to be judged in this class.
17. 'Miniature Cymbidium Hybrids' are defined for the purpose of this schedule as Cymbidiums where the flowers are 55mm or less, to be measured horizontally across the visible limits of the flower without manipulation and are miniature in habit.
18. 'Laeliinae Alliance' classes shall include all combinations and not only those hybrids with Cattleya in their parentage. E.g. Epidendrum, Sophronitis, Laelia, Hawkinsara, Cattleyatonia, Leptotes etc.
19. Staking shall be in accordance with the rules of O.S.N.S.W. i.e. flowers may be supported in the best possible manner for presentation. This supporting should be in such a manner so as not to be obtrusive and distract from the overall beauty and charm of the plant. With single flowered genera e.g. Paphiopedilum, Lycaste, etc., ties or support shall be no higher than immediately below the ovary. If it is necessary to tie above the bottom flower or top branch, the judges are permitted to penalise, or temporarily remove such tie for the purpose of judging.
20. The cover for plants under protection for humidity must be transparent.
21. Champion seedling is not to be considered for Grand Champion unless it has already won the Champion in its class.
22. Plants offered for sale at the show must be free of disease and pests, offered at a maximum rate of \$100 or less and sold or rejected for sale at the discretion of the President or the President's representative. (An exceptional plant may be offered for sale at a higher price with sole permission from the President.)
23. Only members who have benched a suitable number of plants in this show (at the discretion of the President or representative) may offer plants for sale. The commission charged by the Bankstown Orchid Society for the sale of members plants will be 15% from those members who provide a minimum of 4 hours supervision at the venue, or 20% from members who do not attend for the required length of time. The supervision required to avoid the extra commission will not include the day of set up or the day of dismantling. Please ensure that you sign on and off in the attendance book, and report to the Committee member 'in charge' at that time.
24. **No member may offer for sale any plant or other related item at any place other than the sales table.** A breach of this rule will result in the member being asked to remove any plants from both the show bench and sales table immediately. Any prizes won will be defaulted. All members should report illegal trading to the President or representative immediately for action.

Cym. Death Wish 'Royale' - by Jim Brydie
(Courtesy Ku-ring-gai Orchid Society Bulletin)



This rather different orchid was Best of the Evening Hybrid at Kuringai's June 2016 meeting. I have always liked the "different" orchids, and boy, is this one different. It is a stunner and came from virtually our own backyard. It was created by Kevin Hipkins of Royale Orchids up at Peats Ridge, just outside Sydney.

Death Wish is a really interesting cross. The parents are Cym. Pywacket and Cym. Disney Girl, each of which contains 50% of that wonderful species Cym tracyanum, and the tracyanum influence dominates.

Tracyanum has a striking flower with a nice upright spike and about 15 (12cm) flowers. The flowers have somewhat narrow segments but are boldly coloured with red stripes on a cream to green background. Another unique and pleasing character is its unusual perfume which smells very similar to apricot fruit.

You will often see this species name spelled "traceyanum" with an "e" which is not correct. The species was named in honor of its owner Mr. H A Tracy. It was first described as a species in the Gardeners' Chronicle of 20 December 1890 and the name was published as Cymbidium tracyanum.

Unfortunately, the following year, in Williams' Orchid Grower's Manual, the description of the species appears again but with the owners name given as A.H. Tracey and the plant name given as Cymbidium traceyanum. Williams work was later copied by Veitch in his Manual of orchidaceous Plants (1893), and as these two publications were regarded as the bible by orchidists, the error was subsequently proliferated. (reference : <http://www.orchids.it/il-genere-cymbidium/>)

Like most species, the colours in tracyanum can vary a bit and I have seen many different individuals during the 40 years I have been growing orchids. The most popular always seem to be the ones with darker colours – usually having a more intense green background and darker red stripes, but there are many variations. The most common types seem to be the paler ones with a more yellowish cream background and paler red stripes. But, when I did a bit of research for this article, I must admit that I was quite surprised at just **how** different some of them can be.

I am only guessing, but based on what I have seen over the years, I think that some of the current very dark forms are the result of man made line breeding, and even artificial chromosome doubling, but that doesn't mean they all are. There are certainly records of very different forms going way back before man started playing his laboratory games.

In the small gallery below, I have borrowed a few pictures from the internet to show you some extent of today's variations within the species. When you see some of these newer types, it is easy to see where the inspirations for eye catchers like Death Wish came from, but I would never have imagined it in all the years I have grown tracyanum.

Below are 10 different clones of tracyanums:



fairly typical, good form



paler, common form



unusual spotted form



clone at Royale



'Atlantis'



nearly green form



albino



'Julian' 4n



'New Start'



tracyanum FCC RHS

However, getting back to Death Wish, lets look more closely at its parents Disney Girl and Pywacket. Both were developed by Andy Easton's Geyserland Orchids in NZ but were registered in California. Disney Girl by Mrs Patrice Gomes in 1992, and Pywacket by Eleanor Caughlan of California in 1996.



Robin 'Freckles'



Disney Girl

Disney Girl's parents are tracyanum and "Robin". We can never know which clones were used, but as you can see from the pictures at the left, Robin was an unusual cross in itself with an almost petaloid appearance and strong speckling in all segments. The introduction of tracyanum didn't improve the shape but seems to have intensified the spotting, and Disney Girl is certainly an attractive orchid

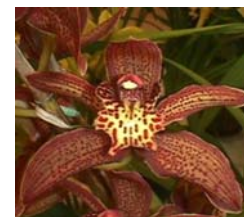
in its own right.

Pywacket is another "different" orchid. Its parents are Tethys and tracyanum. Tethys was famous in its day for the dark colour of many clones, and it's very dark lips. It was bred from earlier dark red Cymbids like Khyber Pass, and Volcano. Again, we don't know which clones the hybridist used, but the samples at the right give you a fair idea of what was involved. "Brenda Starr" was maybe the darkest of the Tethys but most had that fantastic full red lip you see in Brenda Starr. I would imagine that crossing Tethys with tracyanum might have been expected to intensify the red colours before further crosses were used to improve shape, but I am only guessing. Perhaps Mr Easton had already imagined the wonderful dark, spotty, but open flowers Pywacket delivered.

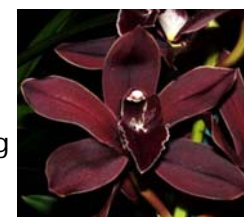


Pywacket Heathrich Hills

Combining Pywacket and Disney Girl was a stroke of genius we can thank Kevin Hipkins for, and he certainly didn't do it to get a full round shape standard Cymbidium. Since Death Wish was registered in 2001, it has been a sensation and growers could hardly get enough of it. There have been 4 clones given awards. "Tiger Jade" and "Peats Ridge" have an HCC, "Royale" and "Speckled Spectre" have an AD. I cant find a picture of Tiger Jade but here are 5 clones to show some of the range. However, I must warn you that in looking at pictures of the clones, there has been a huge colour and pattern variation within supposed pictures of the same clone. Whether this is due to growing in different conditions such as brighter light or more



Pywacket (sdorchids)



Tethys 'Brenda Starr'

shade, or just the photography, I can't say. Just be aware that if you buy one, it may not flower for you exactly the same as these pictures.



'Dark Desire'



'Speckled Spectre'



'Saratoga'



'Peats Ridge'



'Royale'

I am not sure whether I should call it the "Death Wish genre" or perhaps the "Pywacket genre", (which came first, the chicken or the egg), but this genre has sparked a range of similarly 'different' orchids that I am sure many growers find irresistible. I had intended to go on and discuss more of the kind but I have just about used up my colour picture space allowance this month in this one piece so perhaps I will reserve that for next time.

Note: Williams Orchid Growers Manual Edition 7 can be read online at biodiversity library – just google the book name.



Ddc. cobbianum (D Mitsios - Plant of the Night in May, 2017)

Results of Meeting 5th June 2017

96 plants were exhibited at the meeting

Best Orchid

J&N Janz *Paph. insigne* var. *sanderiae*

Best Novice or Junior

Tu Mach *Degarmoara* unknown

Best Foliage

1st -3rd H Arnautovic

Best Fern

1st - 2nd H Arnautovic | 3rd S Lee

Open Section**Intermediate Cymbidium (60mm-85mm)**

1. D Mitsios *Cym.* Death Wish 'Saratoga' x 'Select'
2. P Ius *Cym.* unknown
3. P Ius *Cym.* unknown

Miniature Cymbidium (< 60mm)

1. J&N Janz *Cym.* Paradisian Delight 'Stunner'

Exhibition Cattleya

1. J&N Janz *Blc.* George King 'Serendipity'

Cluster Cattleya

1. Crosby&Costa *C.* Lavender Lulu 'Morrissey'
2. Crosby&Costa *Rtn.* Love Song 'Saguri Iguchi'
3. H Arnautovic *Blc.* Waianae Leopard 'Ching Hua' x *Slc.* Jungle Treasurer 'Mojave'

Miniature Cattleya (65mm-110mm)

1. Crosby&Costa *Sc.* Dal's Magic 'Dondrup'
2. Crosby&Costa *Lc.* Puppy Love 'True Beauty'
3. L Buivids *Slc.* Hazel Boyd 'Apricot Glow'

Cocktail Cattleya (< 65mm)

1. Crosby&Costa *Pot.* Dal's Emperor 'Michelle'

Laeliinae Other

1. B Dixon *L. albida* 'Violet Snowflake' x *L. gouldiana* 'Westernport'

Laeliinae Species

1. F&JFetherston *L. anceps* var. *chamberlainiana*
2. Crosby&Costa *Epi. roseoscriptum*
3. Crosby&Costa *L. anceps* 'Walburn' x 'Helen'

Oncidiinae Hybrid (up to 65mm)

1. Crosby&Costa *Colm.* Wildcat 'Zebra'
2. V Petrovski *Colm.* Wildcat 'Red Star'
3. L Wu *Onc.* Alosuka 'Claire'

Oncidiinae Hybrid (> 65mm)

1. J&N Janz *Onc.* Sherry
2. B Dixon *Dgmra.* Olympia 'Jacqui'

Phalaenopsis Novelty

1. S Lee *Phal.* Ho's 'Little Caroline' x Ruey 'Lih Stripes'
2. S Lee *Phal.* Ho's 'Little Caroline' x Ruey 'Lih Stripes'
3. S Lee *Phal.* Ho's 'Little Caroline' x Ruey 'Lih Stripes'

Paphiopedilum/Phragmipedium (Species)

1. J&N Janz *Paph. insigne* var. *sanderiae*
2. H Arnautovic *Paph. insigne*

Paphiopedilum/Phragmipedium (Complex Hybrids)

1. Crosby&Costa *Paph.* Orchilla Chilton

Dendrobium Species Australian

1. Crosby&Costa *Den. tetragonum*

Vanda

1. J Chow *V.* Lumpini Red

Monopodial Species

1. S Lee *Aer. magnifica*
2. S Lee *Aer. magnifica*
3. L Buivids *Gchls. obliquus*

Dendrobium Hybrids

1. Crosby&Costa *Den.* Miss Singapore
2. F&JFetherston *Den. polysema* 'Yvonne' x *eximium*

Species Dendrobiums

1. L Buivids *Den. glomeratum*
2. L Buivids *Den. moniliforme*

Oncidiinae Species

1. J&N Janz *Onc. ornithorhynchum* 'Russell'
2. J Chow *Onc. splendidum*
3. J Chow *Lem. bictoniense*

Dendrobium Hybrids Australian

1. D Mitsios *Den.* Esmee Poulton 'Tinonee'
2. T Dunn *Den.* Avril's Gold 'Ray'
3. Crosby&Costa *Den.* Issys Summer x Barbara Tullock

Species The Americas

1. J Chow *Coel. bella*

Species Any Other

1. L Buivids *Coel. assamica*
2. L Buivids *Ddc. saccolabium*
3. F&JFetherston *Coel. trimervis*

Any Other Genera

1. V Petrovski *Z.* Adelaide 'Mead' x Drayton 'B'
2. V Petrovski *Pptm.* Kiwi Leopard x (*Z.* Jumping Jack x Syd Monkhouse)
3. S Lee *Bulb.* Louis Sander

Pleurothallidinae Hybrids

1. Crosby&Costa *Masd.* Mary Staal
2. Crosby&Costa *Masd.* Lightning Stripes
3. Crosby&Costa *Masd.* Hurdy Gurdy

Pleurothallidinae Hybrids

1. Crosby&Costa *Rest. brachypus*
2. Crosby&Costa *Rest. schlimii*
3. Crosby&Costa *Rest. striatella*

Novice Section**Intermediate Cymbidium**

1. L Grey *Cym.* unknown

Exhibition Cattleya

1. Tu Mach *Blc.* Glenn Maidment 'Southern Cross'
2. Tu Mach *C.* unknown

Any Other

1. Tu Mach *Onc.* unknown
2. Tu Mach *Wils.* Hilda Plumtree 'Purple Wings'

Fees Due 1st July

- Single Pensioner \$10 | Couple Pensioner \$12
- Couple \$14 | Single \$12 | Family \$17
- \$10 for Bulletin for 11 issues via Australia Post

Results of Meeting 3rd July 2017

85 plants were exhibited at the meeting

Best Orchid

J&N Janz *Paph. insigne* var. *sanderæ*
'No.33'

Best Novice or Junior

Van Le *Phal. villosum*

Best Fern

1st - 2nd: H Arnautovic

Best Foliage

1st - 3rd: H Arnautovic

Open Section**Small Standard Cymbidium (85-100mm)**

1. J&N Janz *Cym. Dural Dream* 'Supreme' x
Pepper Blaze 'Firestick'

Intermediate Cymbidium (60-85mm)

1. V Petrovski *Cym. Sleepy Sarah* 'Snow Blind'
2. V Petrovski *Cym. Red Pepper* 'Janice'

Miniature Cymbidium (<60mm)

1. V Petrovski *Cym. Maluka* 'Baby Pink'
2. V Petrovski *Cym. Autumn Emerald* 'Royale'
3. V Petrovski *Cym. (Snow Peterson x Dr.
Baker)* x Ruby Eyes

Exhibition Cattleya

1. Crosby&Costa *C. Dal's Girl* 'Arcadia'

Cluster Cattleya

1. H Arnautovic *Blc. Waianiae Leopard* 'Ching
Hua' x *Slc. Jungle Treasure*
'Mohave'
2. M Redman *Slc. Kauai Starbright* x self

Miniature Cattleya (65m-110mm)

1. L Buivids *Blc. Jungle Gem* 'Lisa'
2. L Buivids *Lc. Mini Purple* 'Vanessa'
3. Crosby&Costa *Trw. Dal's Emperor* x *Rsc.*
Toshie Aoki

Cocktail Cattleya (under 65mm)

1. Crosby&Costa *C. Lana Coryell* 'Alex L'
2. Crosby&Costa *Sc. Dal's Magic* 'Dandrup'
3. L Buivids *Sc. Little Fire* 'Plum'

Laeliinae Species

1. J&N Janz *C. percivaliana* 'Summit'
2. L Valli *Epi. imatophyllum* 'Topaz'
3. J&FFetherston *Nha. porpax*

Oncidiinae Hybrid (up to 65mm)

1. Crosby&Costa *Colm. Wildcat* 'Zebra'
2. L Valli *Hwra. Mary Eliza*
3. B Dixon *Dgmra. Olympia* 'Jacqui'

Oncidium Hybrid (> 65mm)

1. Crosby&Costa *Bak. Sea Snake* 'Unforgettable'
2. J Chow *Colm. Massai* 'Red'

Paphiopedilum/Phragmipedium (Species)

1. J&N Janz *Paph. insigne* f. *sanderæ*
2. Crosby&Costa *Paph. venustum* f. *alba*
3. M Chin *Paph. insigne*

Paphiopedilum/Phragmipedium (Complex Hybrid)

1. D Mitsios *Paph. Orchilla* 'Chilton'
2. V Petrovski *Paph. Souix* 'Camira' x Joyance

Paphiopedilum Novelty/Primary Hybrids

1. D Mitsios *Paph. Maudiae* 'Magnificum'
2. J&N Janz *Paph. Nitens*
3. M Redman *Paph. Nitens*

Dendrobium Species Australian

1. Crosby&Costa *Den. tetragonum*

Monopodal Species

1. Crosby&Costa *Hal. retrocalla*

Dendrobium Hybrids

1. D Mitsios *Den. sulawesiense* x
chrysopterum

Species Dendrobium

1. D Mitsios *Den. lawesii* v. *bicolor*
2. L Buivids *Den. moniliforme*
3. J&FFetherston *Den. capitulum*

Oncidiinae Species

1. Crosby&Costa *Onc. onustum*
2. M Redman *Onc. sotoanum*
3. D Mitsios *Onc. sotoanum*

Dendrobium Hybrids Australian

1. D Mitsios *Den. Esme Poulton* 'Tinonee'
2. Crosby&Costa *Den. Avril's Gold* 'Joy'
3. Crosby&Costa *Den. Australian Tiger* 'Star'

Species The Americas

1. L Buivids *Gga. pardina*
2. J&FFetherston *Max. variabilis*

Species Any Other

1. J&FFetherston *Ddc. convallariiforme*
2. J&FFetherston *Med. decoratum*
3. J&FFetherston *Pol. galeata*

Any Other Genera

1. Crosby&Costa *Lyc. Luciana*
2. Crosby&Costa *Lyc. Janice Miller* x *skinneri*

Pleurothallidinae Hybrids

1. Crosby&Costa *Masd. Blazing Wing* 'Winter Fire'
2. Crosby&Costa *Masd. Midas Touch* x King of
Kings
3. Crosby&Costa *Masd. Hurdy Gurdy*

Pleurothallidinae Species

1. Crosby&Costa *Rest. guttulata*
2. Crosby&Costa *Rest. brachypus*

Novice Section**Species Paphiopedilum**

1. Van Le *Paph. villosum*

Hybrid Paphiopedilum

1. A Kallis *Paph. Iluka Queen* 'BL'

Any Other

1. A Kallis *Phal. Nankung* x *aphrodite*

Lemons

The woman applying for a job in a lemon orchard in Queensland, seemed to be far too qualified for the job; given her arts and education degrees from a Melbourne University and her previous job as a social worker and a teacher at the local TAFE college. The foreman frowned and said, 'I have to ask you this, have you had any actual experience in picking lemons?'

'Well, as a matter of fact, I have' she said, 'I've been divorced 3 times, owned a Ford station wagon, a Leyland P76, supported Collingwood the last 4 years and brought shares in Dick Smith P/L!'

Minutes of the General Meeting of the Bankstown Orchid Society held at the Scottish Hall, 4 Weigand Avenue, Bankstown, on 5th June, 2017.

The meeting was opened by President Veronica Clowes at 7:30pm.

New Member

A new member Samantha Le joined us tonight, we welcome her and hope that we have a long association together.

Correspondence

Flyer for The Orchid Societies Council of Victoria 24th Annual Melbourne Orchid Spectacular.

Apologies

Doris Scott, and Veronica – who will be away for the July meeting which will be chaired by Max.

Chester Hill

Our Chester Square show turned out to be a very nice display. Early on we thought that we would have no plants, but like last year they all turned up. Grand Champion was Stephen Lee with one of his *Bulbophyllum* Elizabeth Ann Buckleberry, they seemed to be perfectly timed to flower for that Show. Reserve Champion was *Paphiopedilum spicerianum* owned by Veronica Clowes, well done to both of them. Thank you, all of you who support our show and continue to support our Society.

Unfortunately!! We again lost a plant, it was a multi-growth *Paphiopedilum spicerianum* owned by Dimitrios and had been benched on the secure side of the main display table. It was last seen on Saturday evening by our committee on duty and I hope that it went home with a member by mistake! Please, if you have an additional plant, bring it back!! There appears to be late news about the plant.....Dimitrios has been back to Chester Square to view the footage of the camera immediately above the Paph area. Ernest will also visit the square to view this footage which hopefully will solve the mystery.

Prizes for Show

Prizes for the show were awarded to all the winners – congratulations to all of you.

SOS

News from SOS – it seems that there have been changes to the rules regarding how the winner of displays will be determined. The new procedure for Best Display will be two votings, one by judges and the other by the visiting public. How a winner can be determined is yet to be revealed. Of course SOS is in the Shire, so a great percentage of public visitors will be from the Shire, our main competitor in SOS is Sutherland Orchid Society and they are in the Shire! I wonder why they felt the need for change? Our Committee will meet next month to discuss the implications of this change in the Rules, and make a decision for 2017.

Now for some interesting news!

Two weeks ago; just after Chester Square Show, Ernest was contacted by the new manager of Auburn Central Shopping Centre with the view to having an orchid show at the centre. Ernest and I visited the Centre on Friday last week and spoke to the manager and inspected the area that he wished us to use, it is in a good position in front of Woolworths. I explained to him that we could certainly put on a small display and set up a sales table to establish ourselves in the area, he was very keen for us to do so. He; Tony de Graaf, stated that he would supply security from 8 pm, advertising in the local paper, Auburn has only two-hour parking but he would validate parking for those members who were helping out at the show. He would also let us have a small storage area to store our tables the weekend before. This will not at this stage be a competition, for this year, but the sales table will be another opportunity for the Cymbidium growers to sell plants in flower.

Now as to when? I thought that the best time would be the 1st to 3rd September, set up early on the 1st and take down midday on the 3rd. The local shoppers were predominately of Chinese background and the centre was very, very busy on the day we went and when I visited over the weekend. It does clash with Fairfield but should not affect our display.

What do you think? After discussion by the members, unanimous support was given by the members attending. Veronica will contact the manager.

The Tropical Queensland Orchid Council 2017 Conference and Grand Orchid Show will be held 9th – 11th June. Ian and Irene are here today armed with cutting tools to take whatever flowers are offered to them, we will have an extended break to allow this to take place, please give generously.

Our raffle prize of two (one year) subscriptions to Orchids Australia, continues because we have yet to recover the cost of the prize, please support us with this prize. This is a very worth while, interesting, and informative magazine.

Ian gave an interesting talk on his, Irene, and Veronica's trip to the Tokyo Orchid Grand Prix.

With regards to monthly benching it has been decided that the previous rule that had applied for several years will be reinstated. Plants are not to be removed from the bench prior to the supper break.

General Business

- Next meeting will be held on 3rd July, 2017.
- Next Month our speaker will be George Serhan on Cymbidiums.
- Bass Hill Plaza set up 26th July at 3 pm, show 27th July – 30th July, take down from aprox. 1 pm.
- Auburn Central Shopping Centre display and sales 1st – 3rd September.
- It would be appreciated if everyone would ensure that their phone number, email and info is up to date especially with regards to shows also that your email address is likewise up to date please see Ernest.

Plant of the Night – Open: *Paph. insigne* var. *sanderiae* owned by Neva and John Janz

Novice: *Degarmoara* unk owned by Tu Mach. Congratulations to tonight's winners.

Following supper and the raffle draw, Veronica thanked the kitchen staff, the meeting closed at 9:15pm.

Minutes of the General Meeting of the Bankstown Orchid Society held at the Scottish Hall, 4 Weigand Avenue, Bankstown, on 3rd July, 2017.

The meeting was opened by Vice President Max Redman at 7:30pm.

Correspondence: Nil.

Apologies: Veronica – who is away.

Welcome

Tonight as you can see I am chairing the meeting. Ian Chalmers will give us a presentation of Irene and his recent trip to England and the Chelsea Flower Show.

Following up from the June meeting. We again lost a plant, it was a multi-growth *Paphiopedilum spicerianum* owned by Dimitrios and had been benched on the secure side of the main display table. It was last seen on Saturday evening by our committee on duty. A visit to Chester Hill by Dimitrios and Ernest determined that the plant was taken on Saturday night by an unknown person. Ernest obtained a copy of the security camera footage showing the plant's theft and this will be shown later this evening, before Ian gives his presentation. We would like everyone to look at the footage to see if they recognise this person and to acquaint themselves with his image and so be on the lookout for him at our next shows.

So, who went to Mingara? While there I had a discussion with one of the flask sellers and they mentioned that there had been a marked drop off in sales of flasks to hobby growers. This may be due to the fact that properties are getting smaller and therefore do not have room to take on the growing up of seedlings or may be indicative of a general decline in the cultivation of orchids by younger people. We are looking for people to join the Committee those members that are already serving are not getting any younger! We generally have three meetings a year, which last about an hour.

Tony Costa asked about the use of volunteers. Whilst this is always helpful and very much welcome, the Committee is needed to help run the Society and to make long range plans for it. Without the Committee, the Society cannot last!

Bass Hill

As you know the Bass Hill Show is at the end of this month 26th – 30th July, set-up is on the 26th from 3pm and plants maybe benched from the completion of set-up and then from 7am – 12pm on Thursday 27th. It would be very much appreciated if we could have volunteers to come to the Hall on 23rd July at 2:30pm to help load the tables and equipment for the show, it will only take an hour or so, or less if enough hands turn up.

General Business

- Next meeting will be held on 7th August, 2017.
- Next Month our speaker TBA.
- Bass Hill Plaza set up 26th July at 3 pm, show 27th July – 30th July, take down from approx. 1 pm. (Help at the Hall on 23rd at 2:30pm would be very much appreciated)
- Auburn Central Shopping Centre display and sales 1st – 3rd September.
It would be appreciated if everyone would ensure that their phone number, email and info is up to date especially with regards to shows also that your email address is likewise up to date please see Ernest.

Plants of the Night

Open: *Paph. insigne* f. *sanderæ* owned by Neva and John Janz

Novice: *Paph. villosum* owned by Van Le.

Congratulations to tonight's winners.

Following supper and the raffle draw, Max thanked the kitchen staff, the meeting closed at 8:55pm.

If undeliverable, please return to:

Bankstown Orchid Society
C/- PO Box 4405
WINMALEE 2777

BULLETIN BANKSTOWN ORCHID SOCIETY
June | July 2017